

Bluestonleiter

Das Tonmaterial der Bluestonleiter bildet das Grundvokabular der Jazzimprovisation.

Sie besteht aus dem Tonvorrat der Moll-Pentatonik, erweitert durch die übermäßige Quarte.

Diese 6 Töne sind ausreichend, um phantastische Solos zu kreieren.

Bluestonleiter in C



Aufgabe 3

Lerne die Bluestonleiter in C auswendig und probiere die Töne/Sounds mit einem Playalong aus.

Frage: Welche Töne klingen eher normal? Welche Töne klingen spannungsvoller?

Aufgabe 4

Lass Dir 4-taktige Phrasen einfallen und nimm hier Bezug zu den Bluesthemen Blue Seven, Tenor Madness und The Blues Walk (Aussage/Wiederholung/Folgerung)

Bluesphrasen

Beispiel 1:

Musical notation for Beispiel 1, measures 1-12. The notation is in 4/4 time and features a blues scale with a key signature of one flat (B-flat). The melody consists of eighth and quarter notes, with some rests. Measure numbers 5 and 9 are indicated at the start of their respective lines.

Beispiel 2:

Musical notation for Beispiel 2, measures 13-24. The notation is in 4/4 time and features a blues scale with a key signature of one flat (B-flat). The melody includes eighth notes, quarter notes, and a triplet of eighth notes. Measure numbers 13, 17, and 21 are indicated at the start of their respective lines.

It's your turn #1

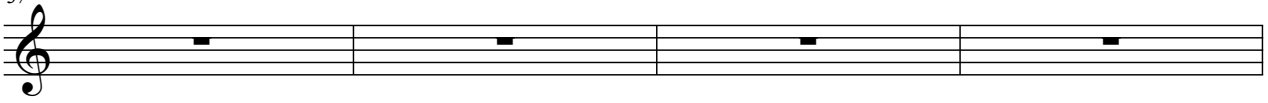
Musical notation for 'It's your turn #1', measures 25-36. The notation is in 4/4 time and features a blues scale with a key signature of one flat (B-flat). The melody consists of whole notes with rests. Measure numbers 25, 29, and 33 are indicated at the start of their respective lines.

Bluesphrasen

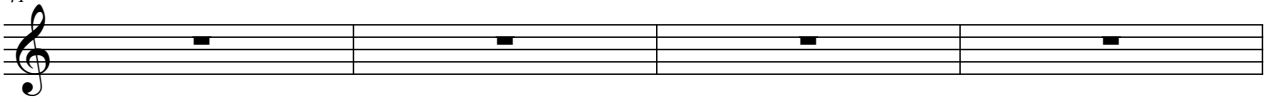
2

It's your turn #2

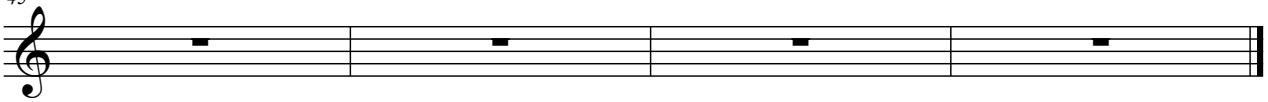
37



41

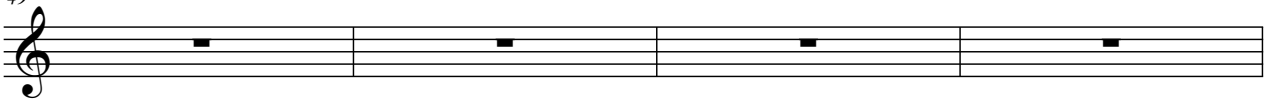


45

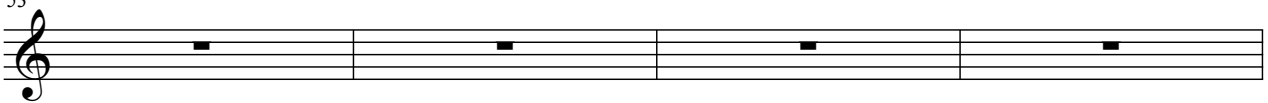


It's your turn #3

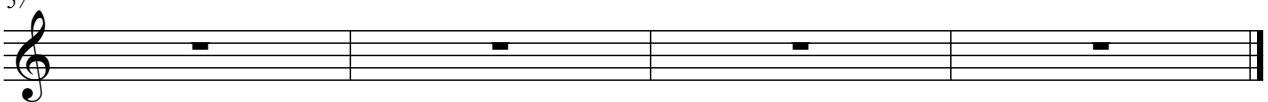
49



53

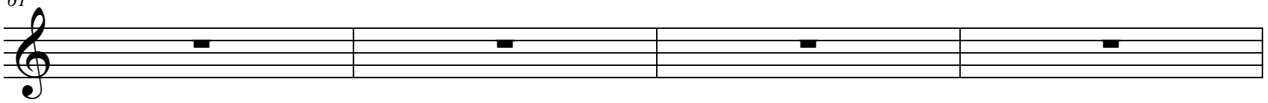


57

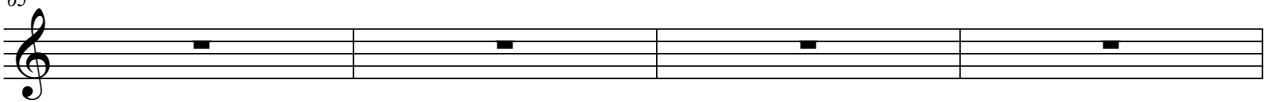


It's your turn #4

61



65



69

